



ULTRATM RACKING & SHELVING

Code	Dimension	Capacity	Price
Upright Frames - With Heavy Duty Footplates & Dynabolts			
U2438	2438mm High x 838mm	9000KG	\$84
U3048	3048mm High x 838mm	9000KG	\$109
U3650	3650mm High x 838mm	9000KG	\$119
U4267	4267mm High x 838mm	9000KG	\$139
U4877	4877mm High x 838mm	9000KG	\$154
U5485	5485mm High x 838mm	9000KG	\$169
U6098	6098mm High x 838mm	9000KG	\$189

Heavy Duty Beams - With Safety Clips

B2591	2591mm internal, 100mm Box	2378kg	\$45
B2591-120	2591mm internal, 120mm Box	3208kg	\$49
B2743	2743mm internal, 100mm Box	2156kg	\$50
B2743-120	2743mm internal, 120mm Box	2851kg	\$52
B3000	3040mm internal, 120mm Box	2309kg	\$56

Racking Accessories

HFP01	Footplate	Heavy Duty Footplate	\$10.00
FTB01	Frame Tie Bar	(37x24x1.5mm) - 381mm	\$12.00
WTB01	Wall Tie Bar	(37x24x1.5mm) - 381mm	\$12.00
PSB01	Pallet Support Bar	(40x40x2.0mm) - 838.2mm	\$12.00
FEK01	Frame Extension Kit		\$45.00
CP01	Corner Protector	150x150x400mm	\$25.00
FP01	Frame Protector	H400	\$39.00



OUR RACKING HAS BEEN INDEPENDENTLY TESTED TO AS4084
(AUSTRALIAN STANDARD FOR STEEL STORAGE RACKING)
BY MELBOURNE'S MONASH UNIVERSITY

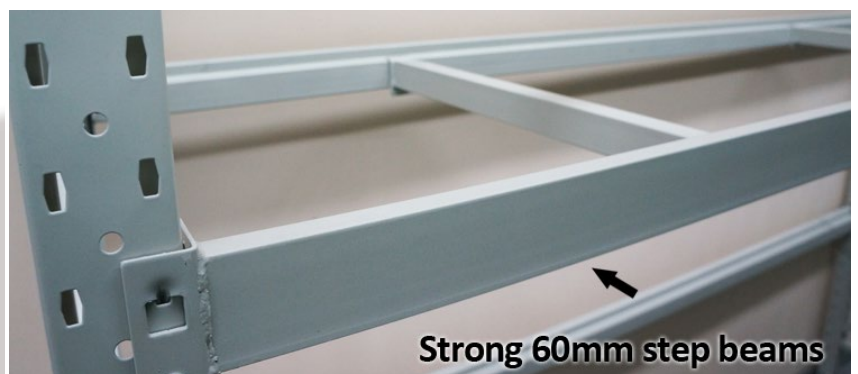
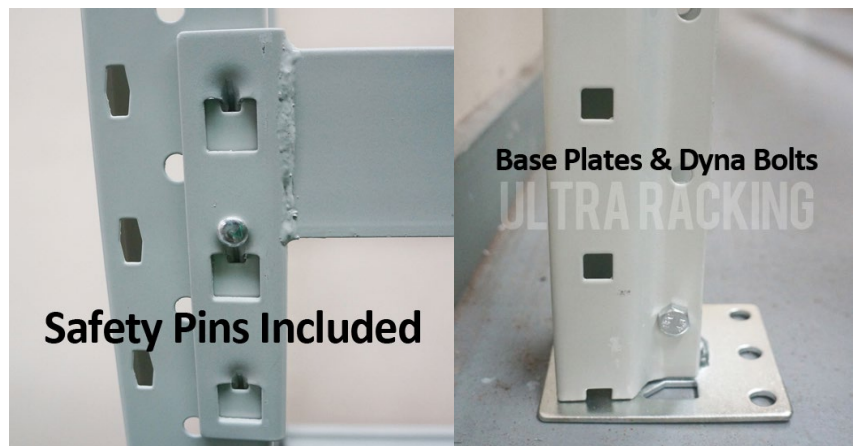


LONG SPAN SHELVING

It's easier if you know
How High x How Deep
x How Wide you need

Per One bay – 2 uprights x 4 levels (without particle boards)

	High x Length (mm)	Capacity/Shelf	600mm deep	Extra Bay (Connected)
1800mm H	1800 x 1500	745 kg	\$249	\$199
	1800 x 1800	517 kg	\$279	\$219
	1800 x 2000	426 kg	\$289	\$239
	1800 x 2400	291 kg	\$319	\$269
2000mm H	2000 x 1500	745 kg	\$259	\$209
	2000 x 1800	517 kg	\$289	\$229
	2000 x 2000	426 kg	\$299	\$249
	2000 x 2400	291 kg	\$329	\$279
2400mm H	2400 x 1500	745 kg	\$279	\$219
	2400 x 1800	517 kg	\$299	\$239
	2400 x 2000	426 kg	\$309	\$259
	2400 x 2400	291 kg	\$349	\$289



Call us for Quote: 1800 793 783 or email: info@wholesalesdirect.com.au
 Visit our warehouse: 218-220 Hammond Rd, Dandenong South VIC 3175
 Opening hour: 9am-5pm Monday -Friday , 9.30am - 1pm Saturday